

Nanaimo Station

Startup Village/Startup Housing

Site location



Site



Site Statistics

Nanaimo Station Startup Village

Site Area: 4 acre main west site, 0.5 over bus loop

Startup SRO Scale Units: 100- 140

Startup stacked townhouse units: 40

Startup Townhouses: 18 on fee simple lots

Lodge Units: 56 (8 rooms per floor) x2 sites.

Total: 300+ units. Half of space is open/park.

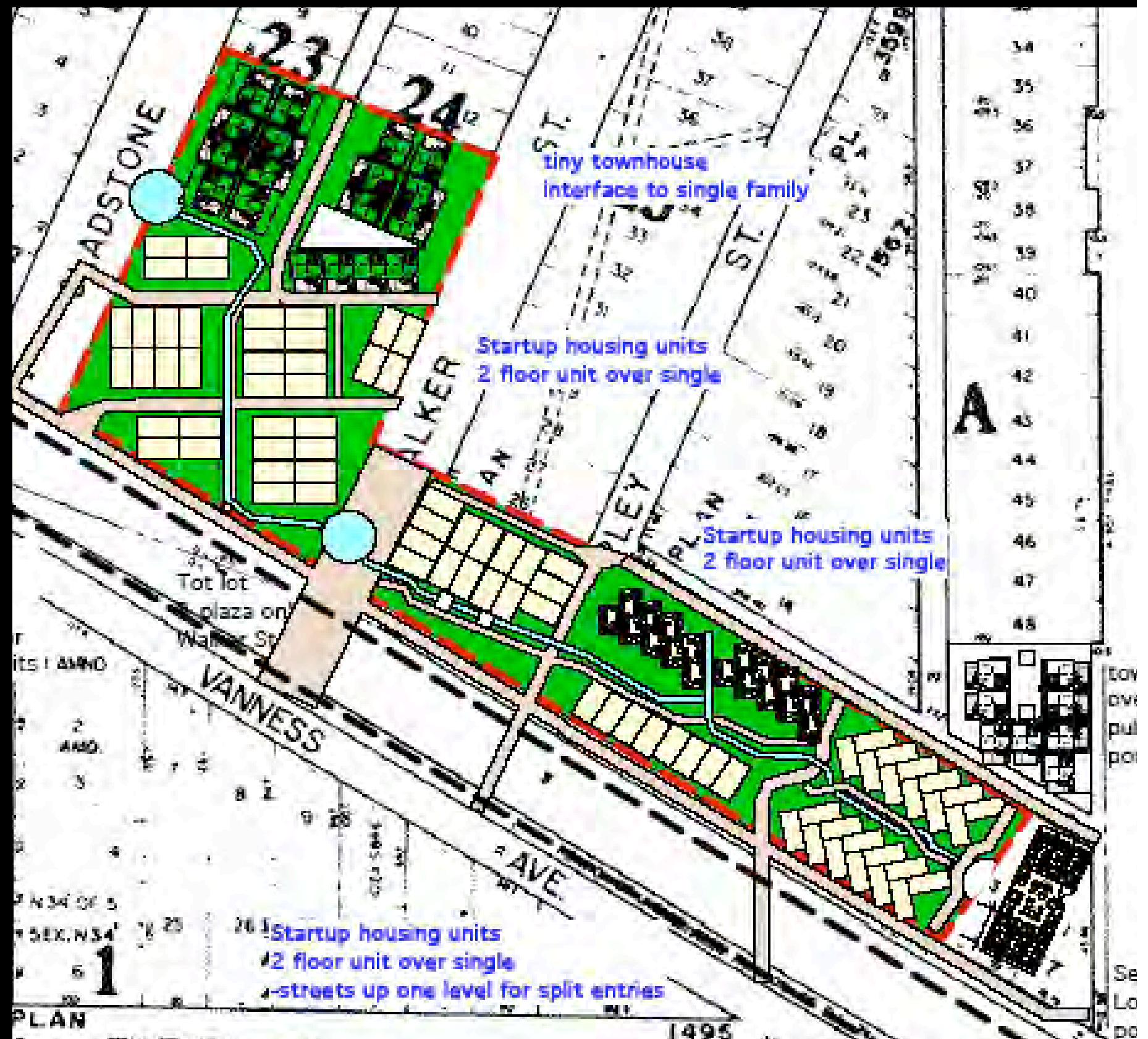
Units per acre on Lodge: Bus loop airspace: 112

Units per acre on village portion west: 60 upa

Units per acre on net parcel areas: 80

Nanaimo Station Prototype

- Daylight creek
- Create housing mix
- Provide small houses/on lots
- Include unfinished units
- Keep park ambience
- Add piazza + tot park
- Include pedestrian street



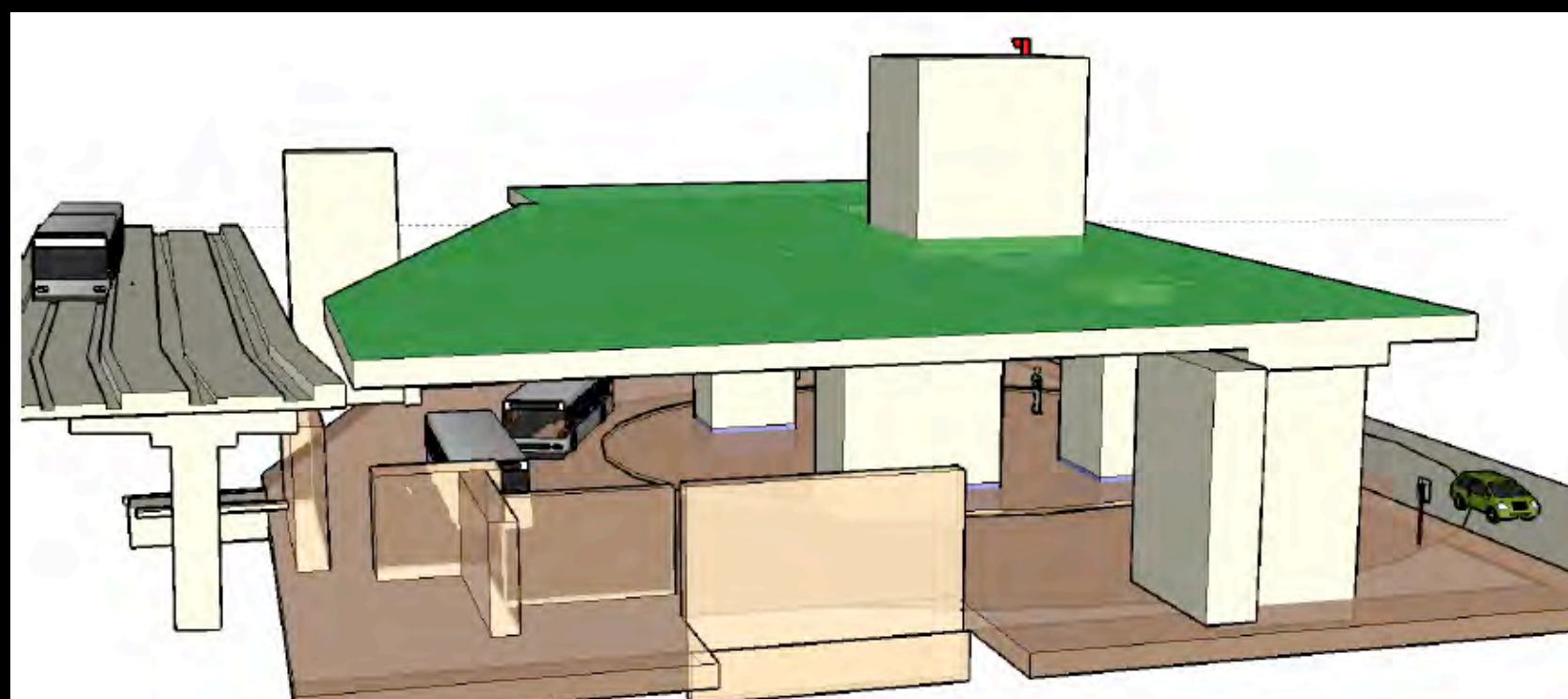
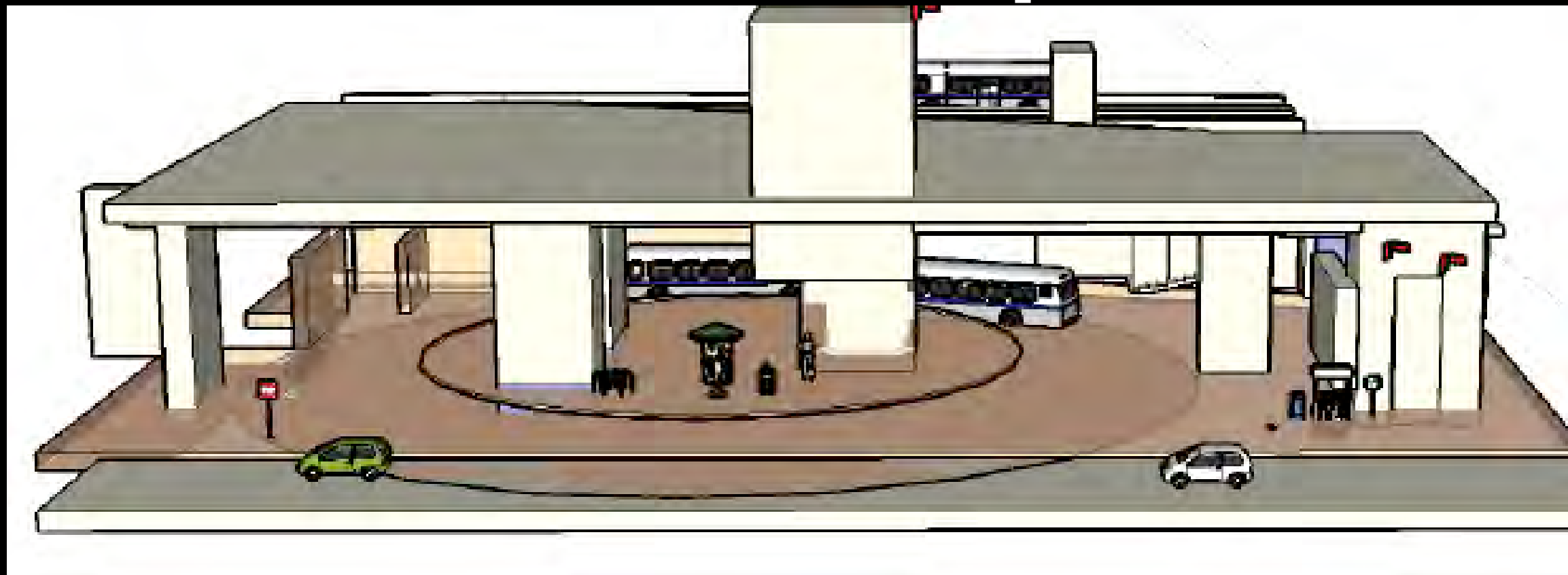
The station

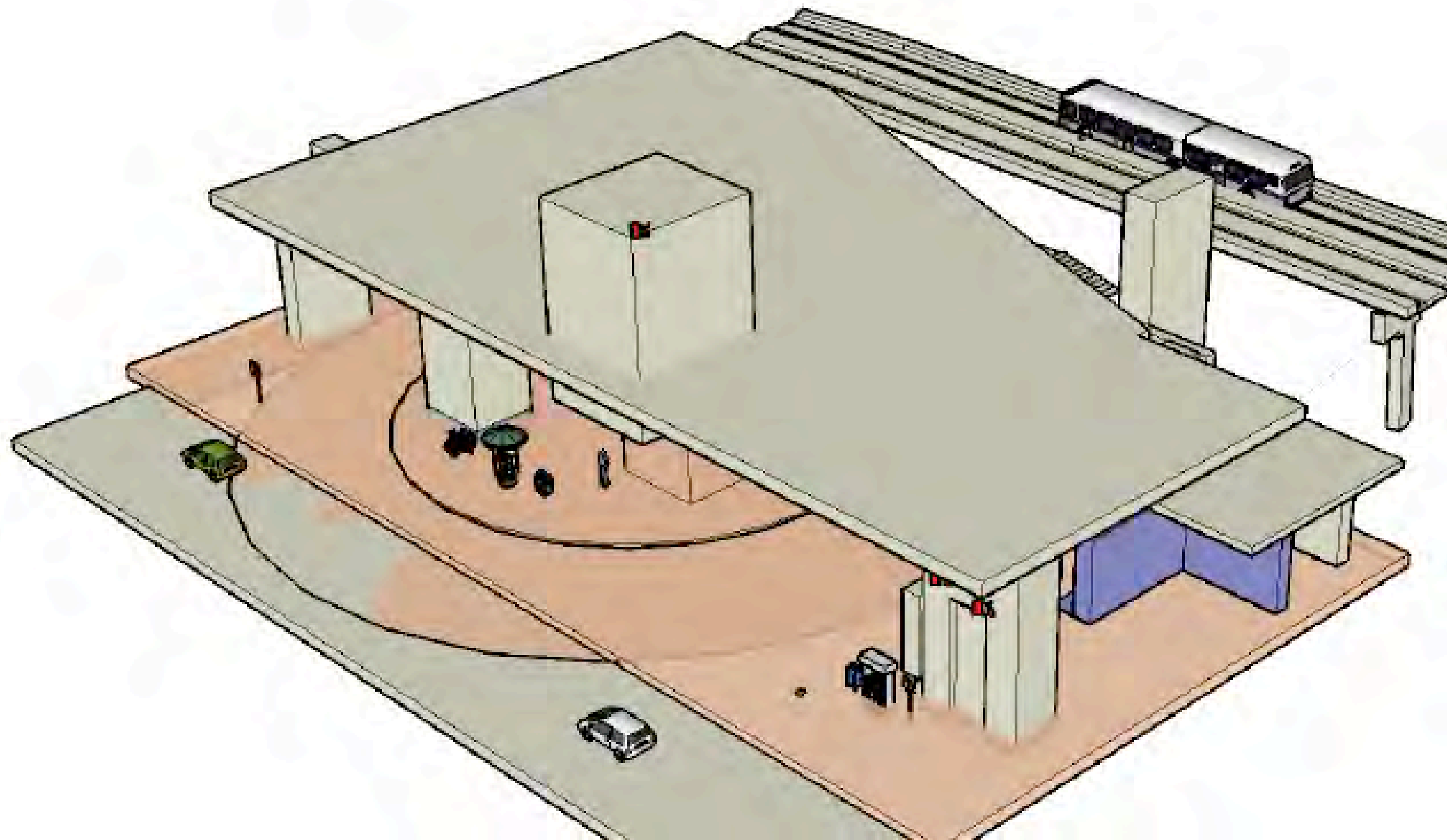


Bus Loop Airspace Use



Seniors Co-op Over







Seniors Co-op Mid Rise Over Nanaimo Station Bus Loop
Shops and Bus Loop Under, Startup Village to West.

The village street



Startup Village & Homes



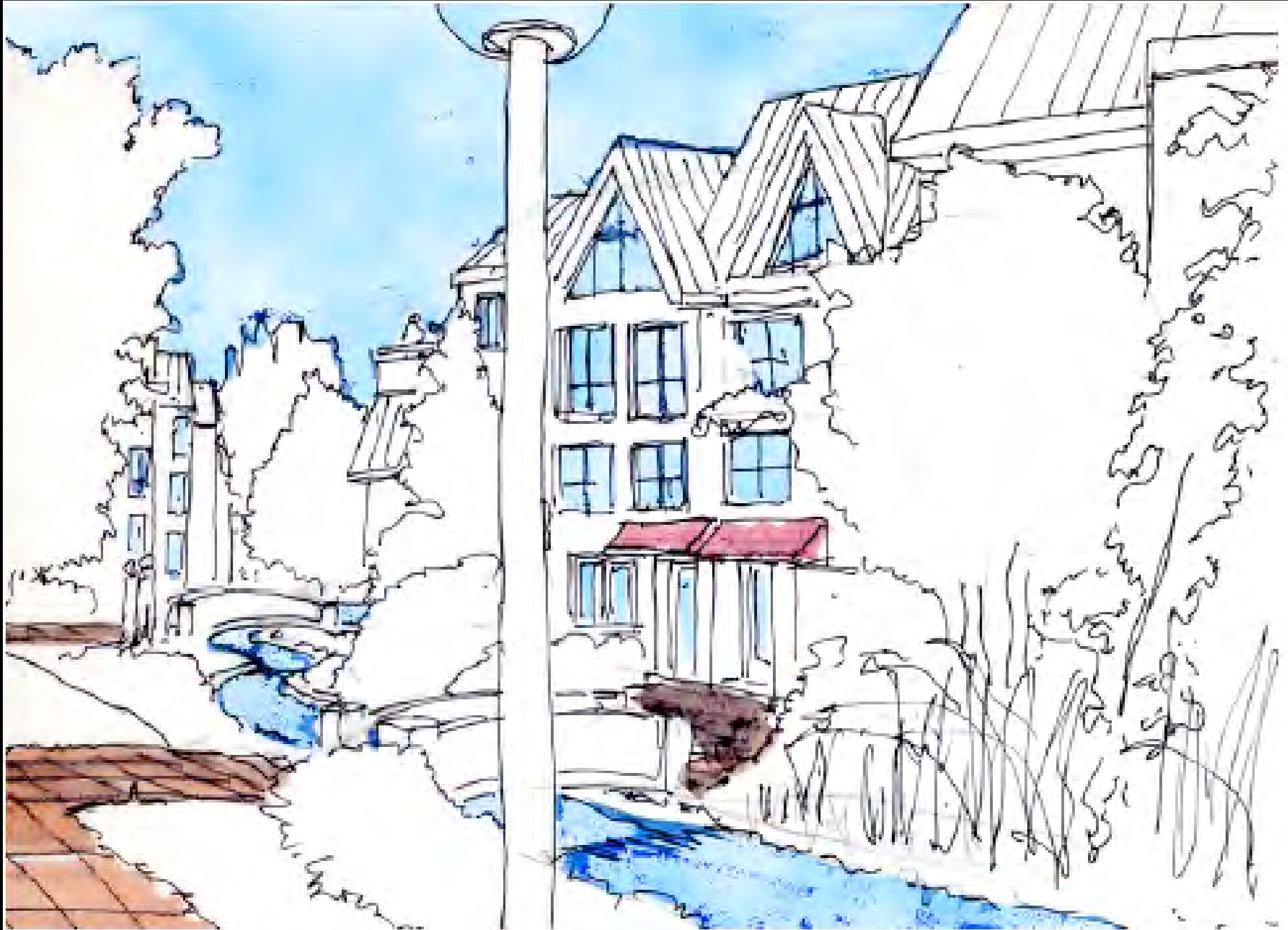
Area has small house precedents



Greenway/Street



Family Housing Too



East half of village



Central plaza / tot play



Central Open Space



Looking south to skytrain



Piazza for Kids



East site from piazza



Mixed Housing on Creek



West, street, east parts



West half, north view



West half, to east half



West site looking north



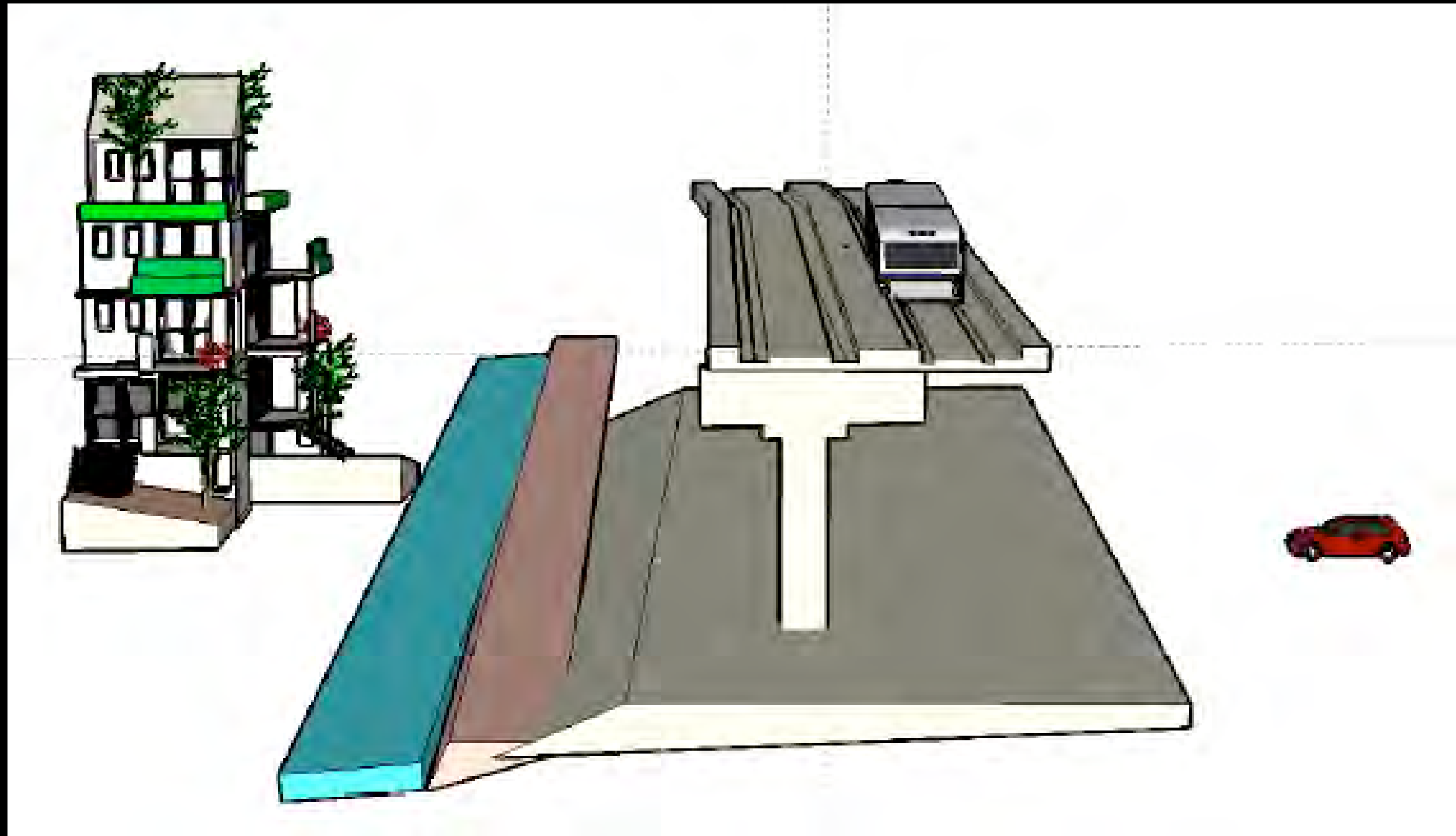
Amenities exist already



A beautiful central place



Housing & skytrain



A challenge + opportunity

